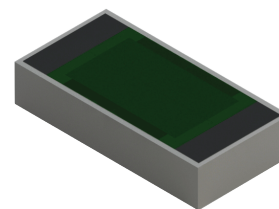


RM2010ZZ-XXXXGN-2T Features:

- Top Terminals w/ Isolated Backplane
- Solder Attachment
- Customer Defined Testing Available
- RoHS Compliant or SnPb Available
- Tape & Reel or Waffle Pack Available (Standard is bulk)
- 2% Resistor Tolerance



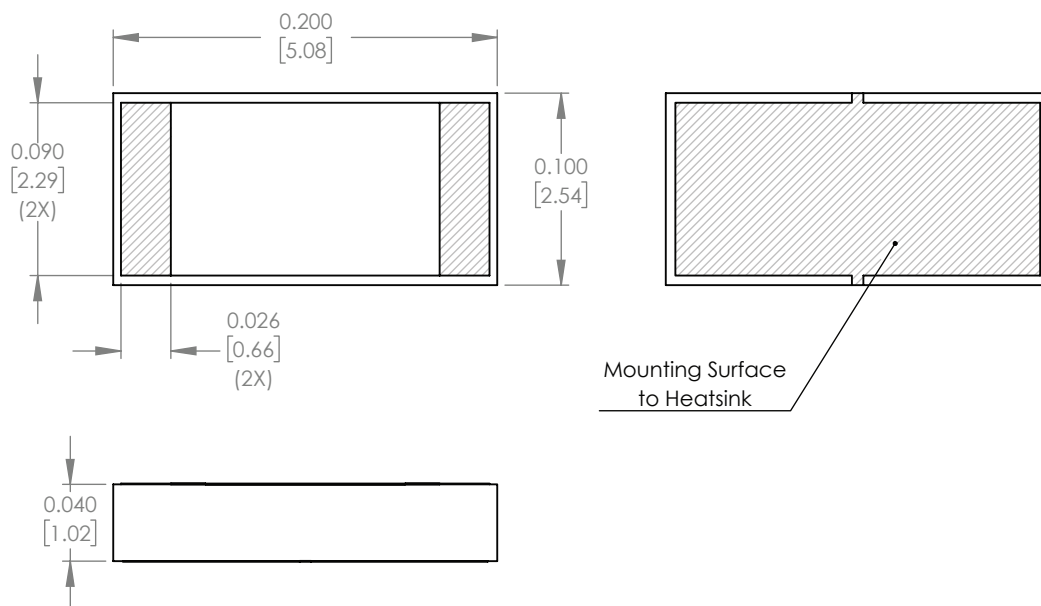
Actual Size

RM2010ZZ-XXXXGN-2T Parameters:

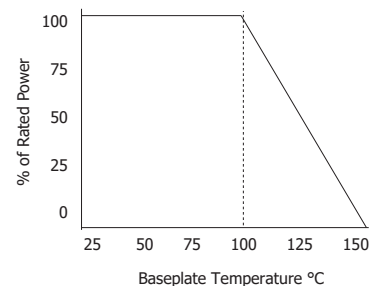
Resistance Range:	10Ω to 1KΩ
Rated Power:	20W*
Construction:	Thick Film on AIN
Operating Temperature:	-55 to +150°C

* Rating based on ≤100°C constant baseplate temperature

RM2010ZZ-XXXXGN-2T Dimensions:



RM2010ZZ-XXXXGN-2T Power Derating Curve



Dimensions in inches [mm]
Tolerance is ± 0.005 [0.127]
unless otherwise stated

Ordering Information:

RM	2010	ZZ	-	XXXX	G	N	-	2T	UU
Prefix for Top Terminals w/ Isolated Backplane Configuration	Size 2010	Value Code Examples: 10R0 - 10Ω 1000 - 100Ω 50R0 - 50Ω 1001 - 1KΩ		Tolerance G - 2%	Normal Inspection Contact factory for additional options	Substrate 2T - 0.040" AIN		Packaging Blank - Bulk TR - Tape and Reel WP - Waffle Pack	
Terminal Metallization		RoHS	Magnetic	Solder	Epoxy	Wirebond			
CC - Matte Tin over Copper over Silver		Yes	No	Yes	No	No			
CB - SnPb over Nickel over Silver		No	Yes	Yes	No	No			
CT - Matte Tin over Nickel over Silver		Yes	Yes	Yes	No	No			

Barry Industries reserves the right to change part number and/or process without notification.

RM2010ZZ-XXXXGN-2T Reliability Specifications:

Parameter:	Test Condition:	Results:
Short Time Overload	Apply 1.1x Rated Power for 5 Seconds.	≤ 5.0% Resistance Shift
Rated Load Life	Apply 1/2 Power Under 40°C ±2°C 90 Minutes on/ 30 Minutes off. Repeat for 100 hours	≤ 5.0% Resistance Shift
Moisture Resistance	MIL-PRF-55342 para 4.8.9 95% RH, 25°C - 65°C	≤ 5.0% Resistance Shift
Resistance to Soldering Heat	MIL-STD-202 Method 210 and MIL-PRF-55342 Para 4.8.8.1	≤ 5.0% Resistance Shift
Resistance to Bonding Exposure	MIL-PRF-55342 Para 4.8.8.2	≤ 5.0% Resistance Shift
Solderability	MIL-PRF-55342 Para 4.8.12	>95% Covered
High Temperature Storage	125°C ±2°C for 500 Hours	1.) ≤ 5.0% Resistance Shift 2.) No Significant Abnormality (Visual)
Thermal Shock	-65°C to +150°C 30 Minutes Dwell, 5 Cycles	1.) ≤ 5.0% Resistance Shift 2.) No Significant Abnormality (Visual)

Barry Industries reserves the right to change part number and/or process without notification.